



155a Croydon Road

London, SE20 7TY

Asking Price £375,000

Welcome to this charming Victorian Maisonette located on Croydon Road in London. This delightful property boasts a rich history, having been built in the year 1900, showcasing the elegance and character of the Victorian era.

As you step inside, you are greeted by a spacious kitchen, perfect for preparing delicious meals and hosting gatherings with friends and family. The separate living area offers a cosy space to relax and unwind after a long day.

With three bedrooms, there is ample space for a growing family or for those in need of a home office or guest room. The property also features a single bathroom, ensuring convenience for all residents.

Bromley Council Tax Band C £1,733
Leasehold
Lease 165 years
Service Charges £0
Ground Rent £0

One of the highlights of this maisonette is the direct access to your own garden, providing a tranquil outdoor space where you can enjoy the fresh air and perhaps indulge in some gardening or al fresco dining.

Situated on the top floor, this property offers privacy and a peaceful retreat from the hustle and bustle of city life. With a

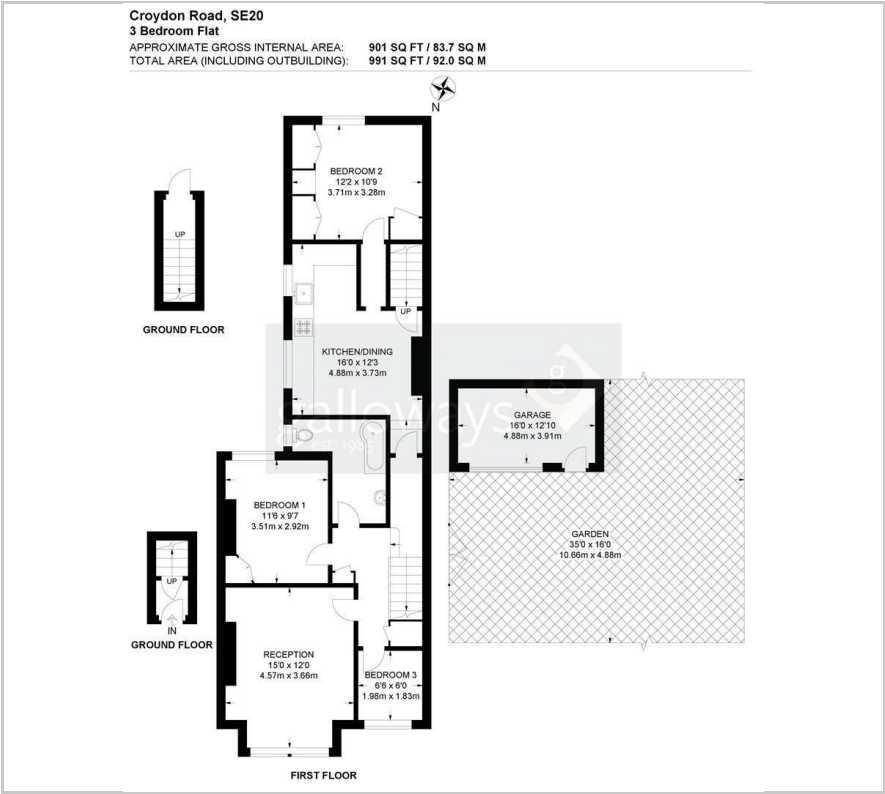
- THREE BEDROOM MAISONETTE
- TOP FLOOR
- VICTORIAN
- SOLE USE GARDEN
- SPACIOUS KITCHEN
- CHAIN FREE
- OWN FRONT DOOR
- 13 MINUTE WALK TO BIRKBECK STATION
- 10 MINUTE WALK TO ANERLEY STATION
- (ALL WALKING TIMES ARE ESTIMATED VIA GOOGLE MAPS)

Viewing

Please contact our Galloways Penge Office on 020 8778 1120 if you wish to arrange a viewing appointment for this property or require further information.



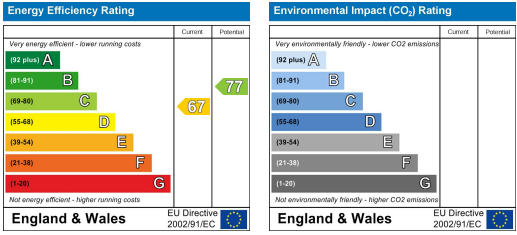
Floor Plan



Area Map



Energy Efficiency Graph



These particulars, whilst believed to be accurate are set out as a general outline only for guidance and do not constitute any part of an offer or contract. Intending purchasers should not rely on them as statements of representation of fact, but must satisfy themselves by inspection or otherwise as to their accuracy. No person in this firms employment has the authority to make or give any representation or warranty in respect of the property.